

# STEER POINT ROAD

FEBRUARY | 2019

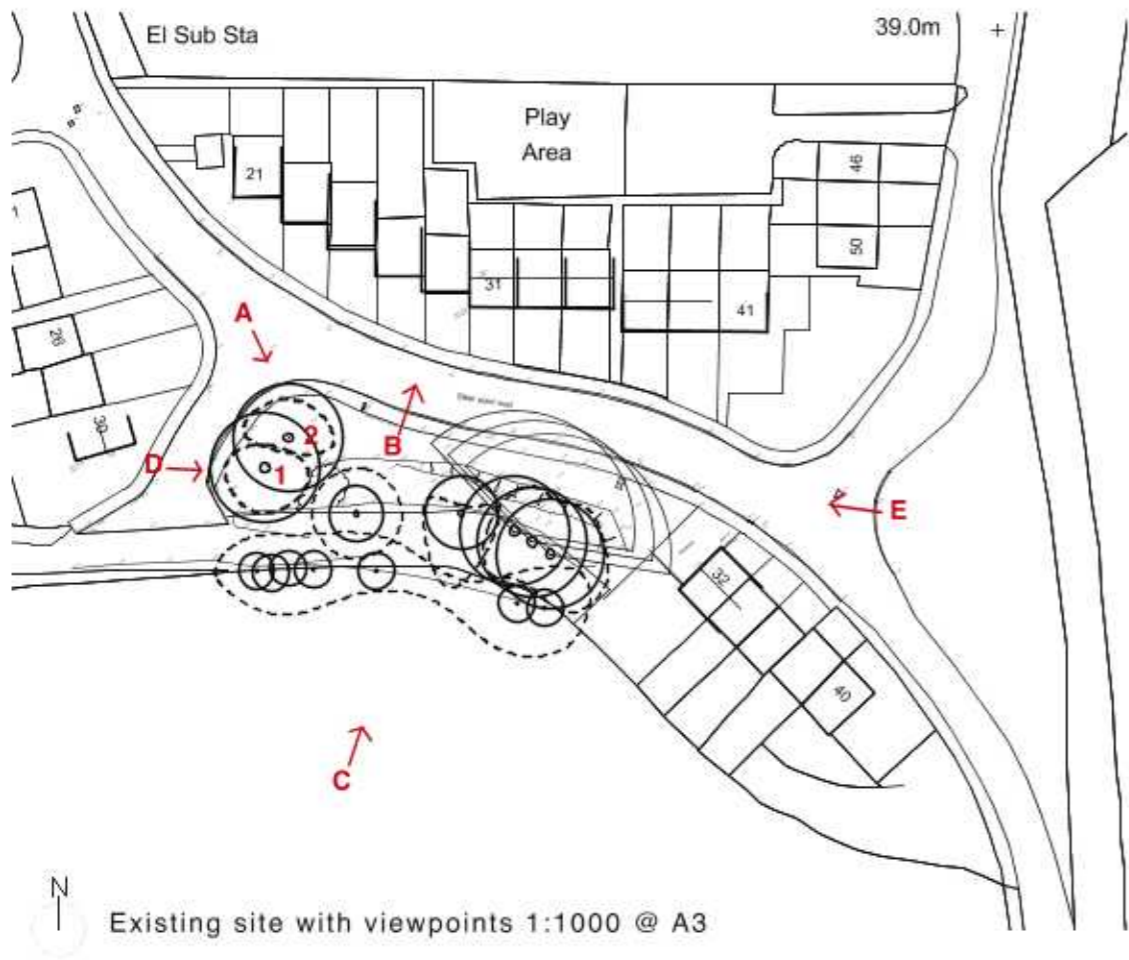
STEER POINT ROAD | BRIXTON | PL8 2BN

PRELIMINARY 11.02.2019

□□ HARRISON SUTTON PARTNERSHIP  
□□ CHARTERED ARCHITECTS







1+2. Existing trees



C South View



A North View



D West View



B Lookout from the site



E East View















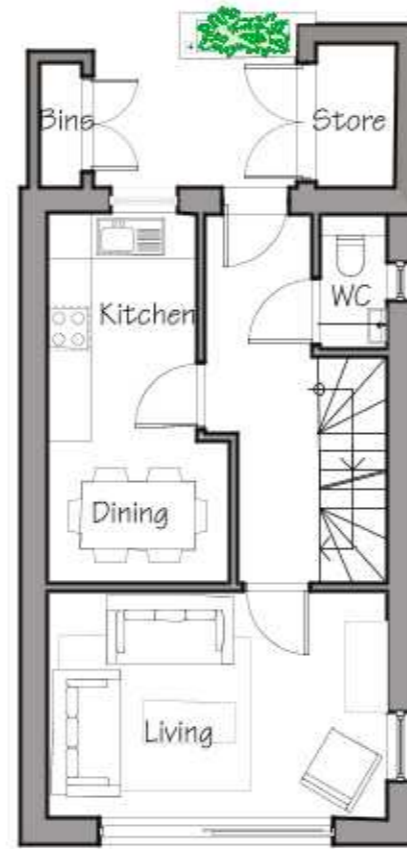


2 BEDS - 80m<sup>2</sup>

- 1 X MASTER
- 1 X DOUBLE
- 1 x FAMILY BATHROOM

Schedule of Accommodation:

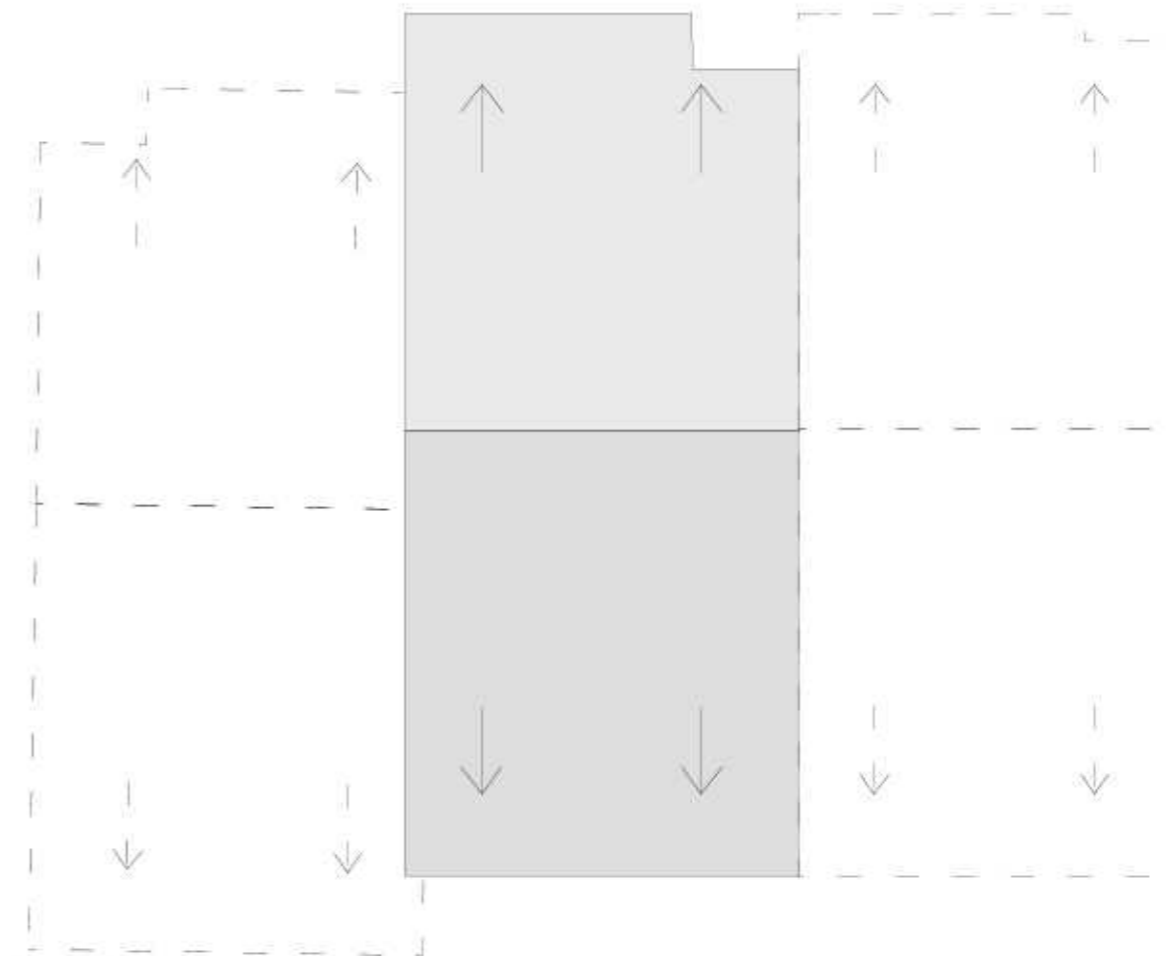
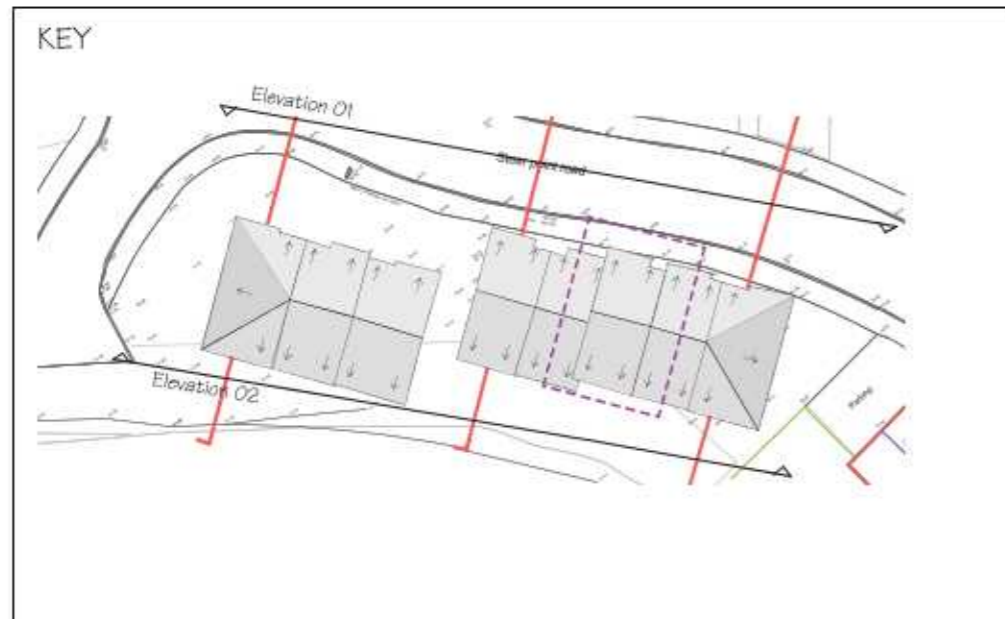
- 4x 3 beds
- 4x 2 beds
- Total 8 units
- Total internal floor area for 3 Bed: 101.5m<sup>2</sup>
- Total internal floor area for 2 Bed: 80m<sup>2</sup>



Ground Floor



First Floor



Roof Plan



3 BEDS - 101.5m<sup>2</sup>

- 1 X MASTER
- 1 X DOUBLE
- 1 X SINGLE
- 1 X FAMILY BATHROOM

Schedule of Accommodation:

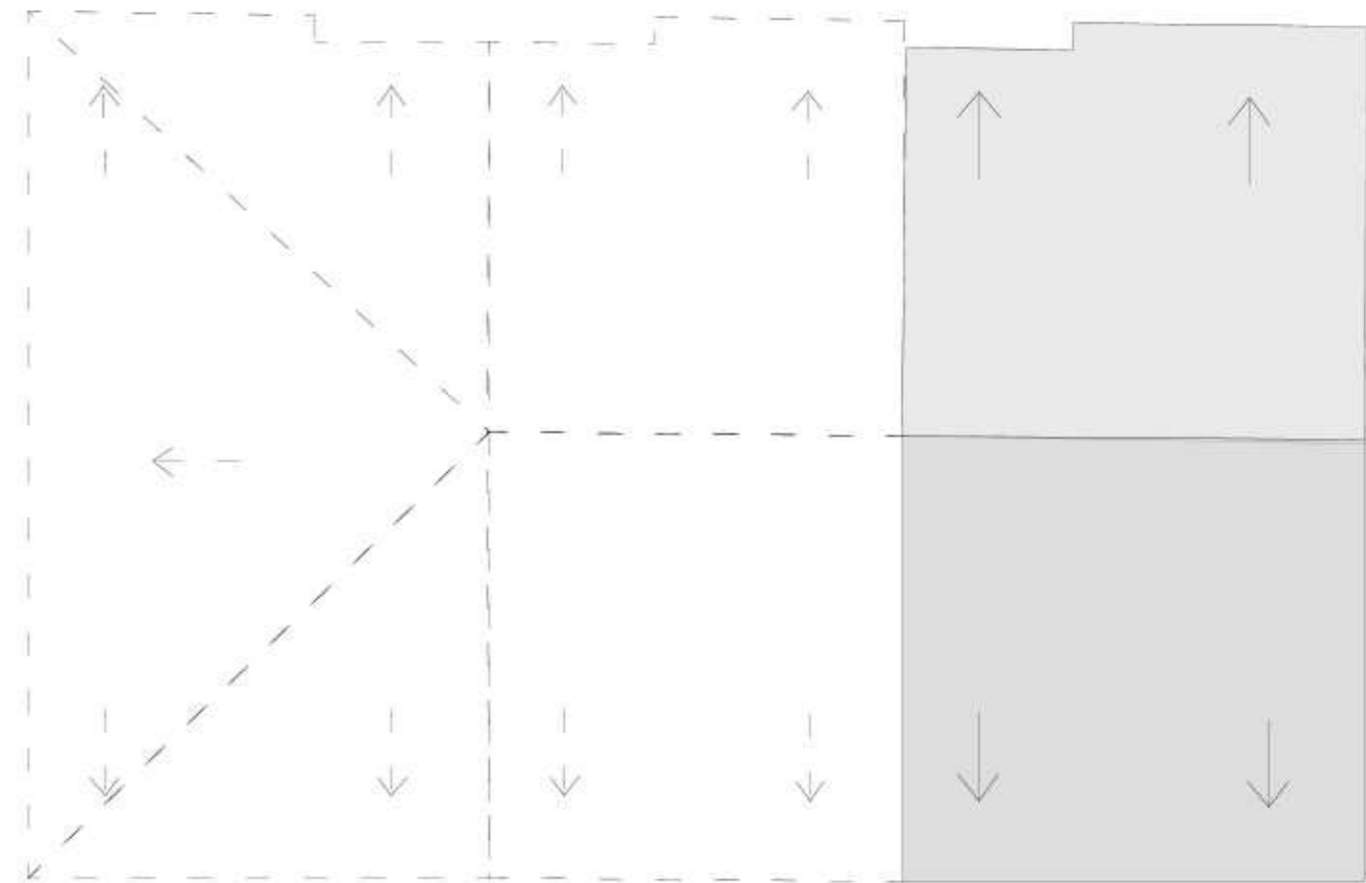
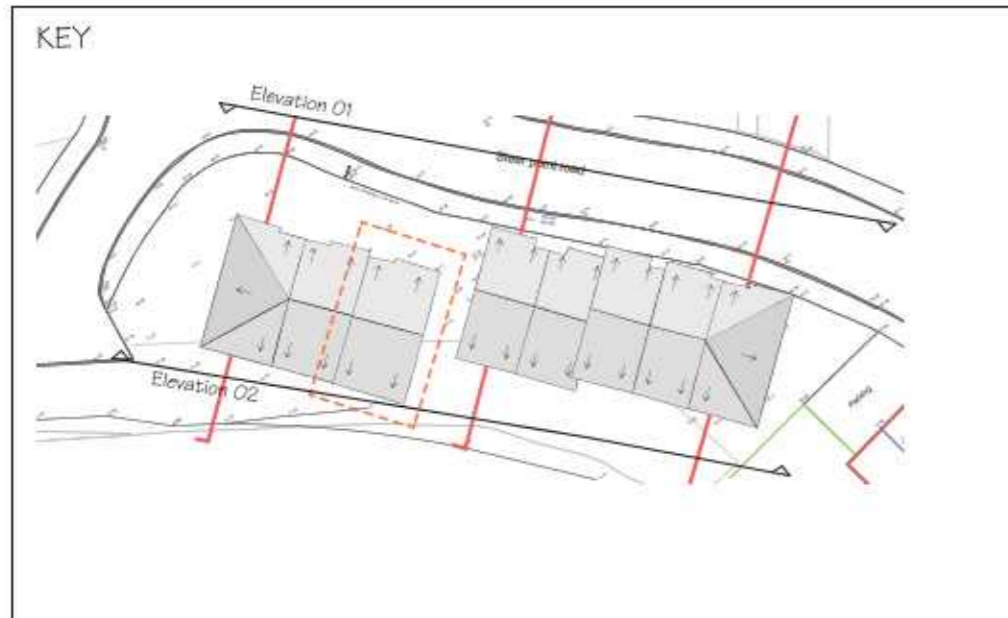
- 4x 3 beds
- 4x 2 beds
- Total 8 units
- Total internal floor area for 3 Bed: 101.5m<sup>2</sup>
- Total internal floor area for 2 Bed: 80m<sup>2</sup>



Ground Floor



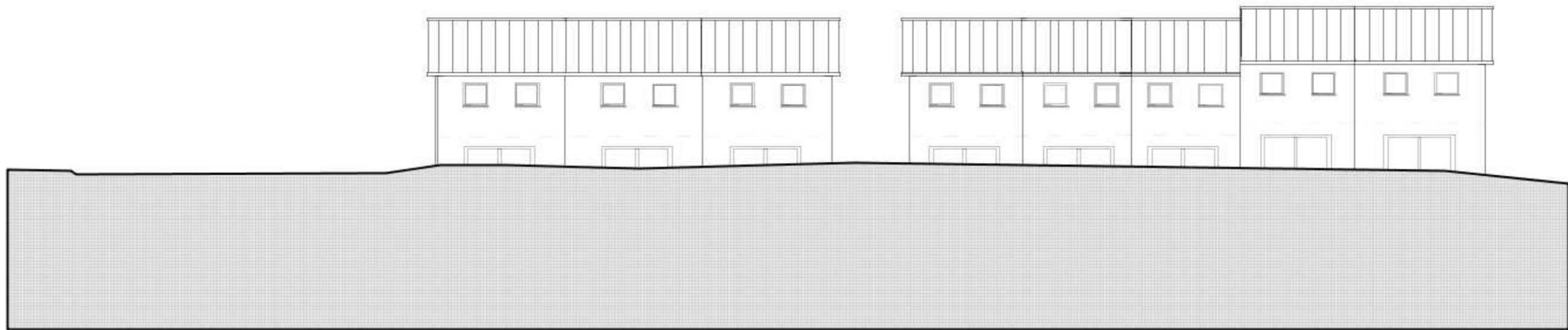
First Floor



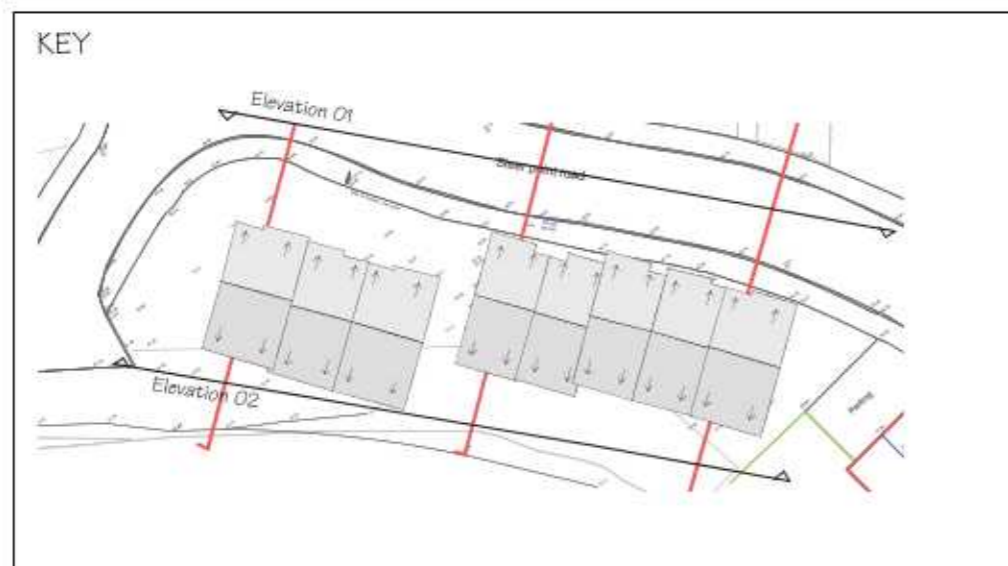
Roof Plan



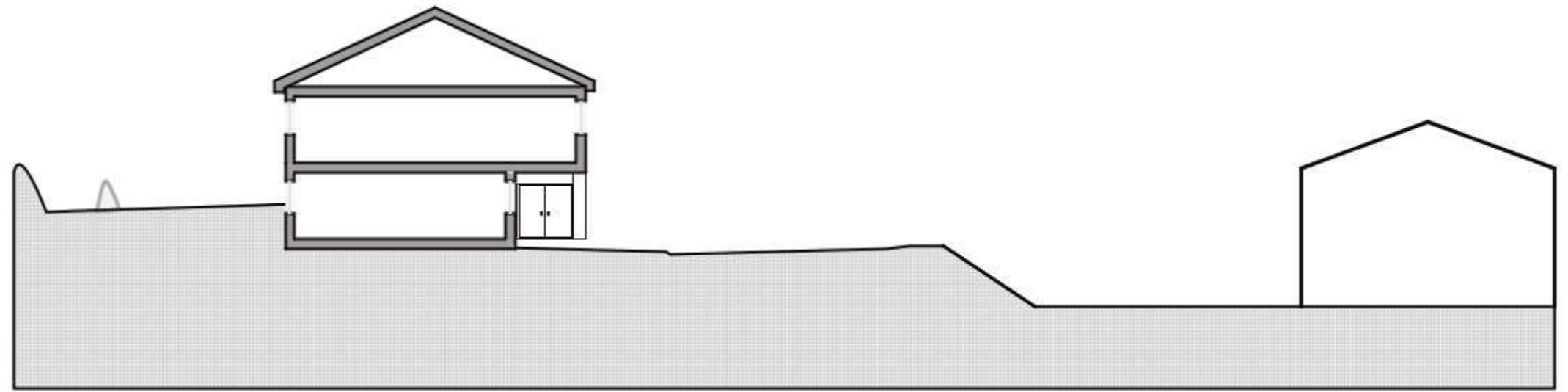
Elevation 01



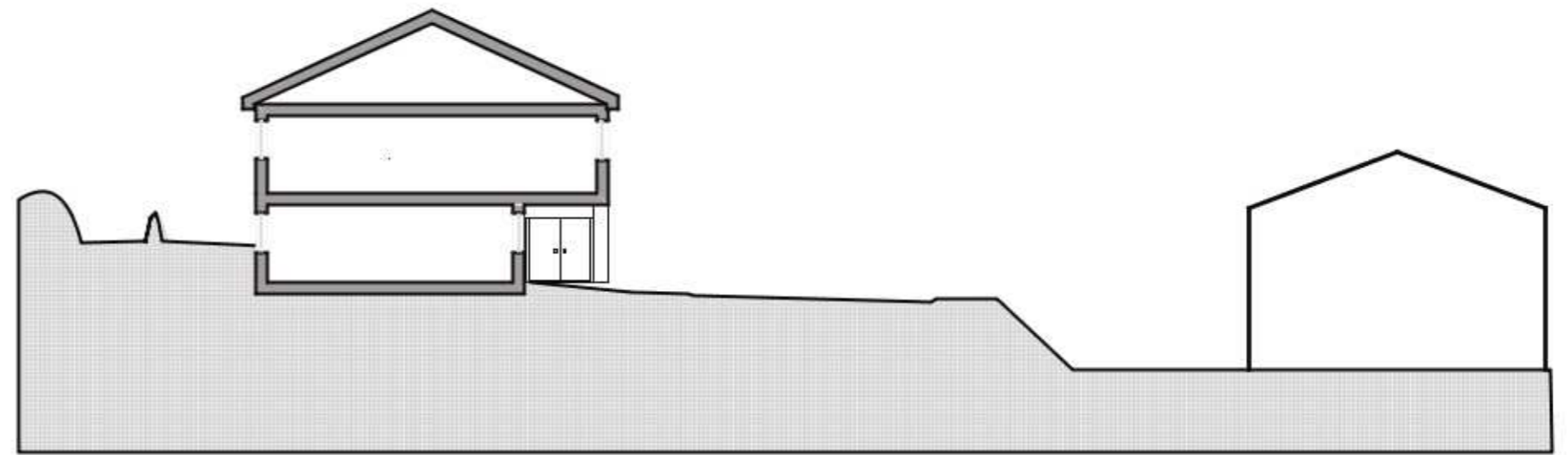
Elevation 02



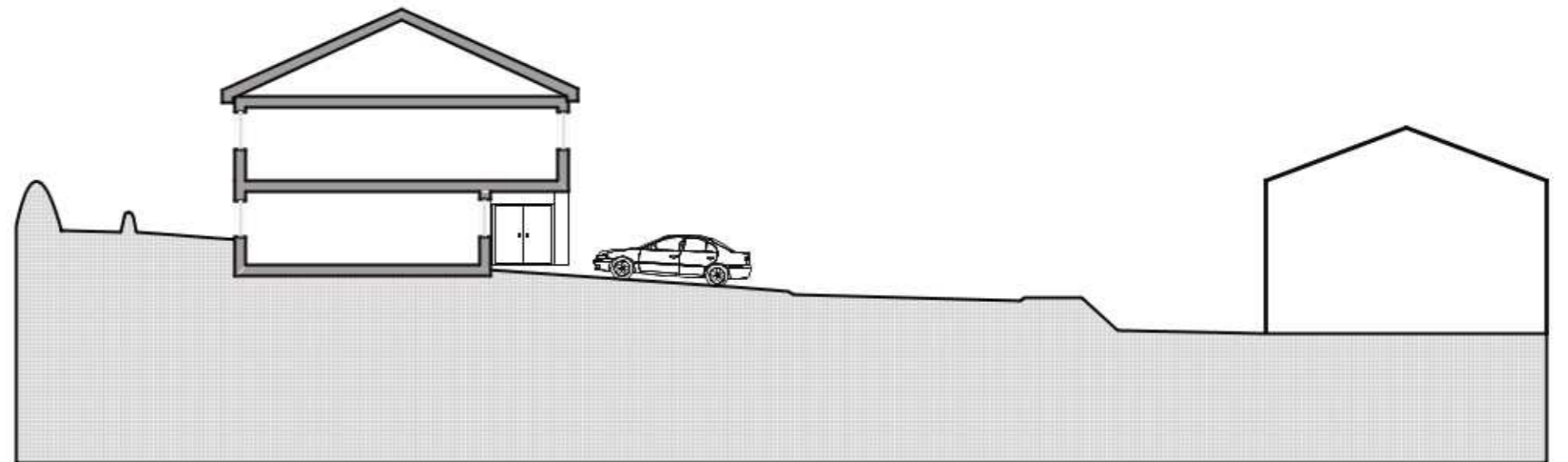




SECTION AA



SECTION BB



SECTION DD





